

LFA-299w MusicTube User Manual

Lavod's MusicTube (Model Nr. LFA-299w) is a high-end water proof personal audio player. It provides not only the fantastic MP3 player functionality but also a best choice to be used in outdoors, specially water sport occasions. MusicTube has passed the severe test of IPx8 rating of under water test. It also implements the technique to oxidize colors on its aluminum body that gives the unit greater protection against accidental damage from either dropping or get rusted in water.

MusicTube is a portable lifestyle product for individual who appreciates design of simplicity of use.

Know your Player

1. Package content:



MusicTube



Stereo Earphone



Water Proof Earphone and Ear buds set



User Manual

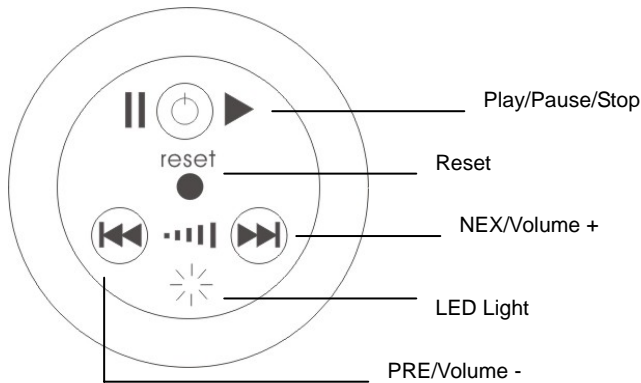


USB Cable



Armband set

2. Layout and keys



3. Connecting the earphones: insert the earphone audio pin into the MusicTube's water proof audio extension cable
4. Battery: the player uses built-in rechargeable-battery. You can recharge the battery via audio extension cable jack by connecting with the USB cable
5. Play mode: the system default mode for playing music is to repeat all songs.
6. Music Format: the system supports various music formats, including MP3 and WMA.
7. USB disk: the MusicTube supports USB 2.0, and is compatible with Windows 2000 or higher without any driver. It can also be used as a USB flash drive for your personal data.

Keys Intro

There are a total of only 4 keys on the MusicTube

1. Play/Pause/Stop:

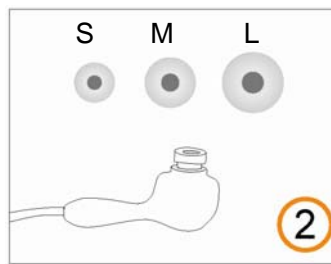
- Play: hold down the key until the LED light is on.
- Pause: a short press will pause the music (LED blinks quickly)
- Stop: a longer press will stop the music playing (LED light is off)

2. Reset: if the unit locks up for whatever reason, press the Reset Key to restart the player and to go back to the default setting.
3. Pre/Volume - : whilst the music is playing, a short press of this key will select the previous song, or a longer press will reduce the volume (when the music is paused, a short press will select previous song.)
4. Nex/Volume + : whilst the music is playing, a short press of this key will select the next song, or a longer press will increase the volume (when the music is paused, a short press will select next song.)

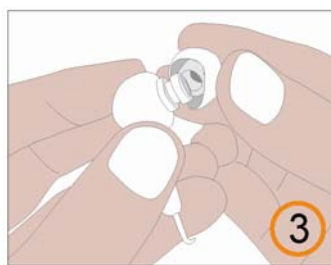
How to change your earplug



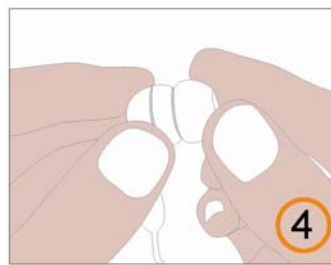
1. Take the ear bud off from the earphone



2. Select a right size of ear bud that can match your ear well



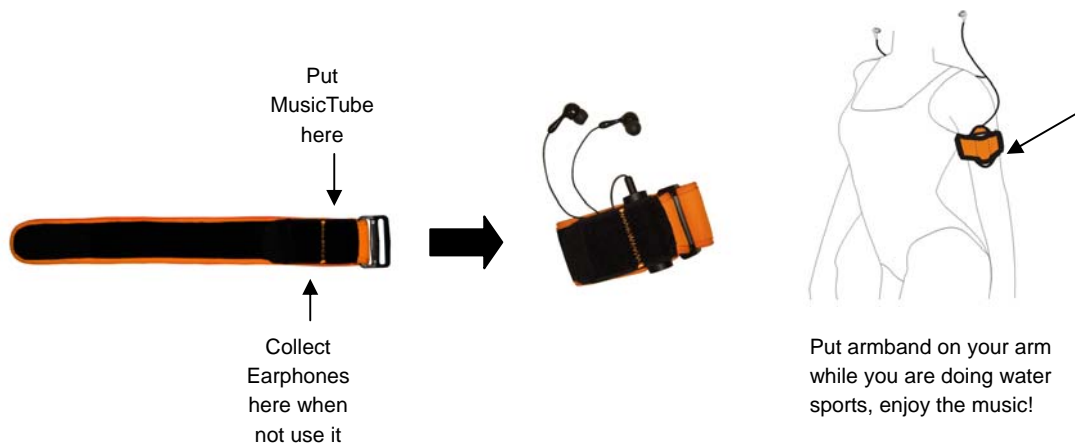
3. Put the ear bud on the earphone



4. Adjust the ear bud to right position

Hint: It is highly recommended to wear the earphone before you are in water as the ear buds can more firmly attach to your ears while they are both dry.

Armband



Features

1. Support MP3/WMA music format
2. USB 2.0 flash drive
3. Rechargeable battery
4. 2 meters water depth for 2 hours, can meet IPx8 standard for both MusicTube and water proof earphone

NOTE:

1. **Do not try to disassemble the player body in any condition or the warranty will be invalid.**
2. **We recommended 3-4 hours of charging before use. The LED light will be turn off once it is fully charged.**
3. **The player will be automatically charged once connected via USB cable to the PC. (LED light will be on) Once the cable is disconnected, the player will enter the PLAY mode itself.**
4. **It is highly recommended that user should connect the USB cable with the player BEFORE plugging into the PC for charging. And pull off the USB cable AND the player TOGETHER from the PC when finished.**